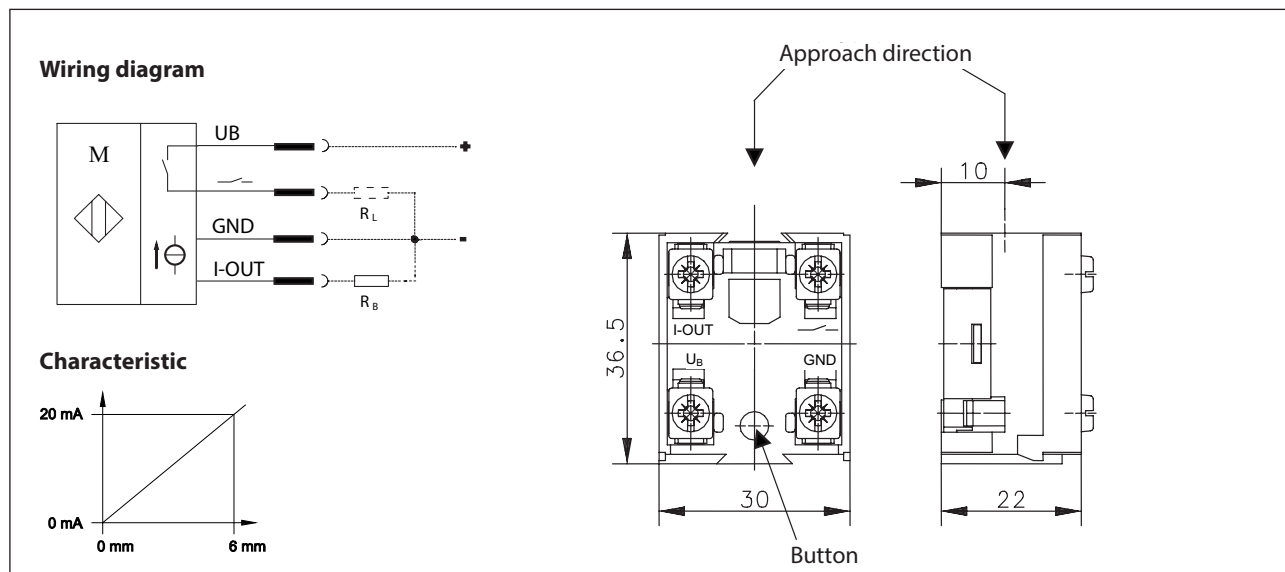


Analogue block Series C74

Description **C74-ANALOG 0-20mA**

Article number **6613299078**



Identifying characteristics in accordance with EN 60947-5-7

Electrical Data	
Rated operating voltage range	U_B 12 - 26 V DC
Voltage output	0 - 20 mA
Linearity errors	$\leq \pm 2,5 \%$ from the end value (20 mA), U_B and temperature at a constant level
Temperature errors	$\leq \pm 10 \%$ U_B constant level
Repetition accuracy	R $\leq \pm 2 \%$ from the end value (20 mA), U_B and temperature at a constant level
Switching output	S PNP NO; (teachable)
Hysteresis	H $\approx 10 \%$
Idle current	I_o < 25 mA
Voltage drop	U_d $\leq 1,6$ V
Utilization category	DC 12
Rated operational currents	I_e 200 mA
Minimum operating current (Switching element)	I_m 1 mA
Residual current	I_r < 0,1 mA
max. load resistor	R_B 400 Ω
Switching element	permanently short-circuit and overload protected
Analogue output	permanently short-circuit and overload protected
Short-circuit protection type	synchronising
Switching frequency	max. 100/min.
Reverse polarity	yes
Readiness delay	t_v < 50 ms

Electromagnetic compatibility (EMC) ¹⁾		
Immunity to Electrostatic Discharge	IEC 61000-4-2	(only in installed condition)
Interference resistance against high-frequency electromagnetic fields	IEC 61000-4-3	
Immunity to fast transient interference variables (bursts)	IEC 61000-4-4	
Immunity to conducted interference induced by radio frequency fields	IEC 61000-4-6	
Immunity against magnetic fields with power frequency	IEC 61000-4-8	
Conducted disturbances/Interference voltage/Interference currents	EN 55011 class B	
Radiated disturbances/electric field strength	EN 55011 class B	

Mechanical data	
Actuating travel	6 mm
Actuating force	2,3 N
Enclosure	Thermoplastic, glass fibre-reinforced
Actuation	Plunger internally, Ø8
Ambient temperature	-30 °C ... +80 °C
Mechanical life	10 x 10 ⁶ switching operations
Type of connection	4 Screw connections (M3,5)
Conductor cross-sections	Solid: 0.5 ... 1.5 mm ² Litz wire with ferrules: 0.5 ... 1.5 mm ²
Installation position	any
Protection type	IP00 acc. to EN 60529

Accessories	
	1 x mounting adapter
	1 x impact pin
	installation material

Actuation
The actuation is only started from approach direction.

EU Conformity ¹⁾
acc. to directive 2004/108/EC

Notes
Due to the open structure of the analogue block, there is no special protection against infiltration of water and against contact with voltage-carrying parts! The reliable switching function is only given in BERNSTEIN switching devices!
¹⁾ To be conform with the EMV guideline (2004/108/EC) a shielded connection cable has to be used.