



## Capacitive Sensors

### Series 80 - PNP

Housing M 12 x 1

- Housing material: PTFE
- Applicable for detection of chemical aggressive media
- Also suitable for food applications
- Sensing distance 0...6 mm adjustable

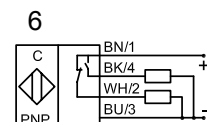
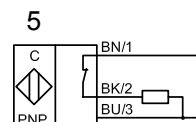
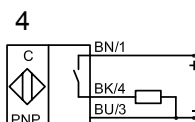
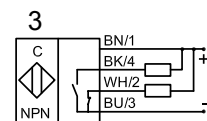
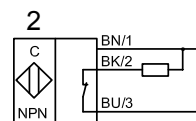
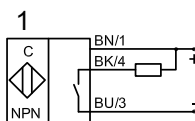
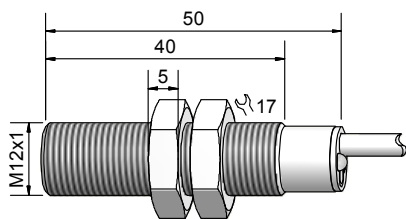


Certificate:



#### Technical data

	Flush mountable
Operating distance $S_n$	2 mm
Operating distance min. / max. adjustable	0...6 mm
Electrical version	4-wire DC
Output function	Antivalent (NO + NC)
<b>Type NPN</b>	
<b>Art.-No.</b>	
Connection diagram No.	
<b>Type PNP</b>	
<b>Art.-No.</b>	
Connection diagram No.	
Operating voltage ( $U_b$ )	10...35 V DC
Output current max. ( $I_o$ )	2 x 250 mA
Voltage drop max. ( $U_o$ )	≤ 2.0 V
Permitted residual ripple max.	10 %
No-load current ( $I_o$ )	Typ. 15 mA
Frequency of operating cycles max.	500 Hz
Permitted ambient temperature	-25...+70 °C
LED-display	Green / yellow
Protective circuit	Built-in
Degree of protection IEC 60529	IP 67*
Norm	EN 60947-5-2
Connection cable	5 m, PTFE, 4 x 0.34 mm <sup>2</sup>
Housing material	PTFE (FDA 21 CFR 177.1550)
Active surface	PTFE (FDA 21 CFR 177.1550)
Lid	PTFE (FDA 21 CFR 177.1550)
Media optimized	Yes



**Made in Germany**

All specifications are subject to change without notice. (13.02.2012)