



Capacitive Sensors

Series 80 - PNP

Housing M 32 x 1.5

- Housing material: Brass
- Sensing distance 2...25 mm adjustable



Certificate:



Technical data

Flush mountable

Operating distance S_n 15 mm

Operating distance min. / max. adjustable 2...25 mm

Electrical version 4-wire DC

Output Antivalent

Type NPN

Art.-No.

Connection diagram No.

Type PNP

KAS-80-30-A-M32-NL

Art.-No.

KA 0732

Connection diagram No.

6

Operating voltage (U_B) 12...30 V DC

Output current max. (I_o) 2 x 200 mA

Voltage drop max. (U_d) ≤ 2.0 V

Permitted residual ripple max. 5 %

No-load current (I_o) < 15 mA

Frequency of operating cycles max. 150 Hz

Permitted ambient temperature -25...+70 °C

LED-display Yellow

Protective circuit Built-in

Degree of protection IEC 60529 IP 67

Norm EN 60947-5-2

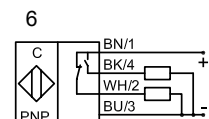
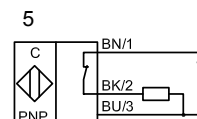
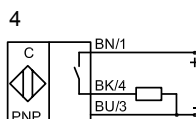
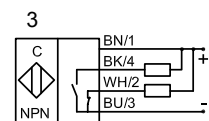
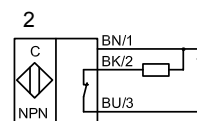
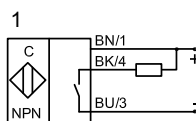
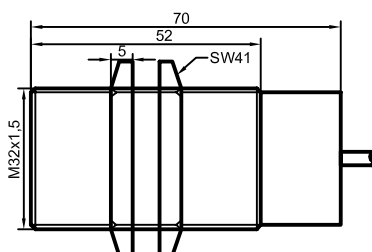
Connection 2 m, PVC, 4 x 0.5 mm²

Housing material Brass

Active surface PTFE

Lid PA / PPO

All specifications are subject to change without notice. (01.02.2010)



Made in Germany