



## Capacitive Sensors Series 95 - AC / DC

Housing M 32 x 1.5

- Housing material: PBT
- Sensing distance 2...25 mm adjustable
- Normally open and normally closed function
- One potential-free change-over contact
- Switch-off delay adjustable 1 sec - 10 min

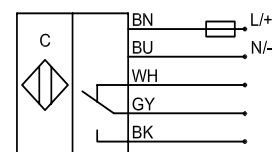
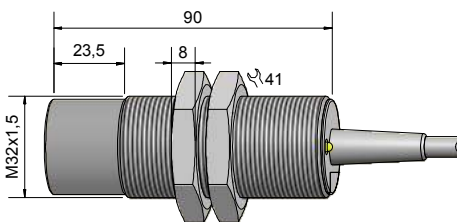
Certificate:



### Technical data

	Non-flush mountable
Operating distance $S_n$	20 mm
Operating distance min. / max. adjustable	2...25 mm
Electrical version	5-wire AC / DC
Output	Relay, 1 CO
<b>Type</b>	<b>KAS-95-32-1CO-K-M32-PBT-OFD</b>
<b>Art.-No.</b>	<b>KA 0856</b>
Operating voltage ( $U_B$ )	20...250 V AC / DC
Load max. AC (I, U)	1 A, 250 V
Load max. DC (I, U, P)	1 A, 220 V, 60 W
No-load current ( $I_o$ )	2,1 mA
Frequency of operating cycles max.	2 Hz
Permitted ambient temperature	-25...+70 °C
LED-display	Yellow
Protective circuit	Built-in
Degree of protection IEC 60529	IP 67*
Norm	EN 60947-5-2
Connection cable	2 m, PVC, 5 x 0.34 mm <sup>2</sup>
Housing material	PBT
Active surface	PBT
Lid	PBT

\*With sealed potentiometer



**Made in Germany**