



Capacitive Sensors Series 95 - AC / DC

Housing Ø 32 mm

- Housing material: PBT
- Sensing distance 2...25 mm adjustable
- Normally open and normally closed function
- Potential-free change-over contact
- Switch-on and switch-off delay changeable
- Adjustable timer 1 sec - 10 min.



Certificate:

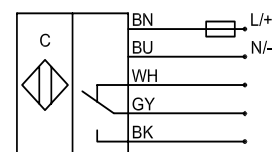
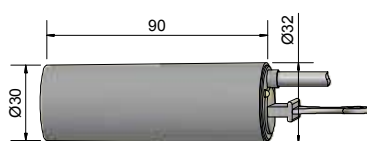
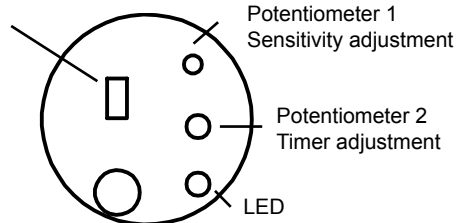
Technical data

Non-flush mountable

Operating distance S_n	20 mm
Operating distance min. / max. adjustable	2...25 mm
Electrical version	5-wire AC / DC
Output	Relay, 1 CO
Type	KAS-95-32-1CO-K-PBT-TD
Art.-No.	KA 0858
Operating voltage (U_b)	20...250 V AC / DC
Load max. AC (I, U)	1 A, 250 V
Load max. DC (I, U, P)	1 A, 220 V, 60 W
No-load current (I_o)	2,1 mA
Frequency of operating cycles max.	2 Hz
Permitted ambient temperature	-25...+70 °C
LED-display	Yellow
Protective circuit	Built-in
Degree of protection IEC 60529	IP 67*
Norm	EN 60947-5-2
Connection cable	2 m, PVC, 5 x 0.34 mm ²
Housing material	PBT
Active surface	PBT
Lid	PBT

*With sealed potentiometer

Change-over switch
Switch-on / Switch-off
delay



Made in Germany