



**Capacitive Filling Level Probe - KFS**

Series: **PER LEVEL®**

**1 Limit value switching point**

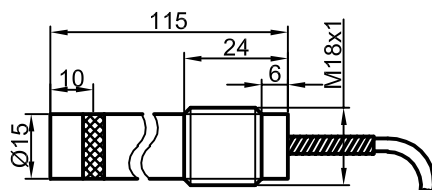
- For connection to capacitive amplifiers KFA-5-...-Y50
- Housing material: PEEK, Ø 15 mm / M 18 x 1
- Probe length 115 mm

Certificate:



**Technical data**

|   |  |
|---|--|
| Active zone   | 10 mm, related to probe tip              |
| <b>Type</b>   | <b>KFS-5-1-GL-115-10-PEEK/VA-M18-Y55</b> |
| <b>Art.-No.</b>   | <b>KF 0347</b>                           |
| Permitted ambient temperature                           | -70...+250 °C                            |
| Degree of protection IEC 60529 (Probe)                  | IP 67                                    |
| Connection cable to the evaluation unit<br>KFA-5-...Y50 | 2 m FEP, coax-cable with coax-connector  |
| Housing material  | VA No. 1.4305                            |
| Housing material active zone                            | PEEK (FDA 21 CFR 177.2415)               |



All specifications are subject to change without notice. (16.02.2011)

Made in Germany