



Magneto-resistive Sensors

Series 300 • 10 - PNP

Housing M12 x 1

- Housing material: Stainless steel VA
- Sensing distance S_n 1.5 mm

Certificate:



Technical data

Flush mountable

Operating distance S_n 1.5 mm

Electrical version 3-wire DC

Output NO

Type NPN

Art.-No.

Connection diagram No.

Type PNP

MRS-300-M12-10-S

Art.-No.

MR 0002

Connection diagram No. 4

Operating voltage (U_B) 10...35 V DC

Output current max. (I_o) 250 mA

Voltage drop max. (U_d) ≤ 2.5 V

Permitted residual ripple max. 10 %

No-load current (I_o) Typ. 15 mA

Frequency of operating cycles min. / max. 0.5 Hz / 10 kHz

Permitted ambient temperature $-40...+125$ °C

LED-display Yellow

Protective circuit Built-in

Degree of protection IEC 60529 IP 67

Norm EN 60947-5-2

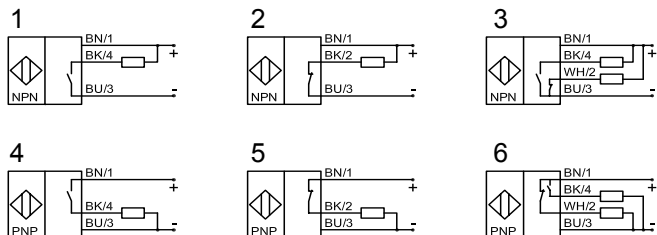
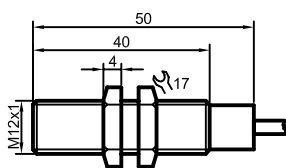
Connection cable 10 m, silicone, 3 x 0.34 mm²

Housing material VA No. 1.4305

Active surface VA No. 1.4305

Lid PEEK (FDA 21 CFR 177.2415)

All specifications are subject to change without notice. (01.09.2010)



Made in Germany