



Magneto-resistive Sensors

Series 300 • 10 - PNP

Housing M 12 x 1

- Housing material: Brass
- For detection of dynamic proceedings (e. g. speed control)
- Detection of ferromagnetic metal parts
- Sensing distance $S_n = 1$ mm
- Length = 50 mm

Certificate:



Technical data

Flush mountable

Operating distance S_n 1 mm

Operating distance min. / max. adjustable -

Electrical version 3-wire DC

Output Normally open (NO)

Type NPN

Art.-No.

Connection diagram No.

Type PNP

MRS-300-M12-10-S-OEM

Art.-No.

MR 0005

Connection diagram No. 4

Operating voltage (U_B) 10...35 V DC

Output current max. (I_o) 250 mA

Voltage drop max. (U_o) ≤ 2.5 V

Permitted residual ripple max. 10 %

No-load current (I_o) Typ. 10 mA

Frequency of operating cycles min. / max. 0,5 Hz / 5 kHz

Permitted ambient temperature -25...+70 °C

LED-display -

Protective circuit Built-in

Degree of protection IEC 60529 IP 67

Norm EN 60947-5-2

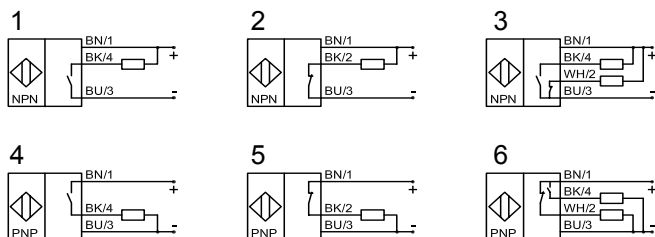
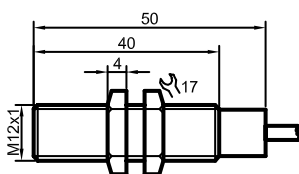
Connection cable 2 m, PUR, 3 x 0,34 mm²

Housing material Brass

Active surface Brass

Lid Epoxide

All specifications are subject to change without notice. (23.09.2010)



Made in Germany